

DOMINGUEZ TECHNOLOGY CENTER

1421 CHARLES WILLARD ST., CARSON, CA

Ports of Los Angeles
& Long Beach



FOR LEASE \pm 91,763 SQUARE FEET

PROPERTY FEATURES

- \pm 91,763 SF Available
- 17 Truck High Positions
- 1 Ground Level Position
- 182' Full Concrete Yard
- Minimum 32' Clear Height
- \pm 13,007 SF of Office Space
- Low Operating Expenses
- Close to the 110, 105, 91 and 405 Freeways
- Proximity to Ports of Los Angeles, Long Beach & LAX

For Further Information:

JOHN SCHUMACHER

Vice Chairman
+1 310 363 4960
john.schumacher@cbre.com
Lic. 00987225

CAROLINE REID

Senior Associate
+1 310 947 4219
caroline.reid@cbre.com
Lic. 02188038

NICKI PEETZ

Client Services Specialist
+1 310 363 4964
nicki.peetz@cbre.com
Lic. 01720809

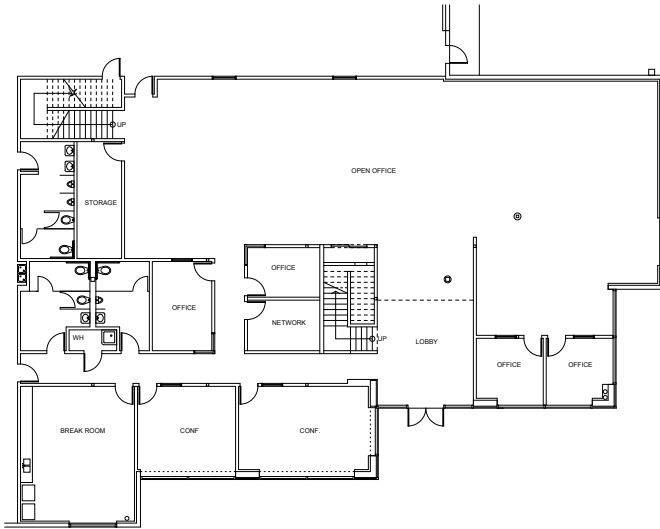
CBRE

2221 Rosecrans Avenue
Suite 100
El Segundo, CA 90245

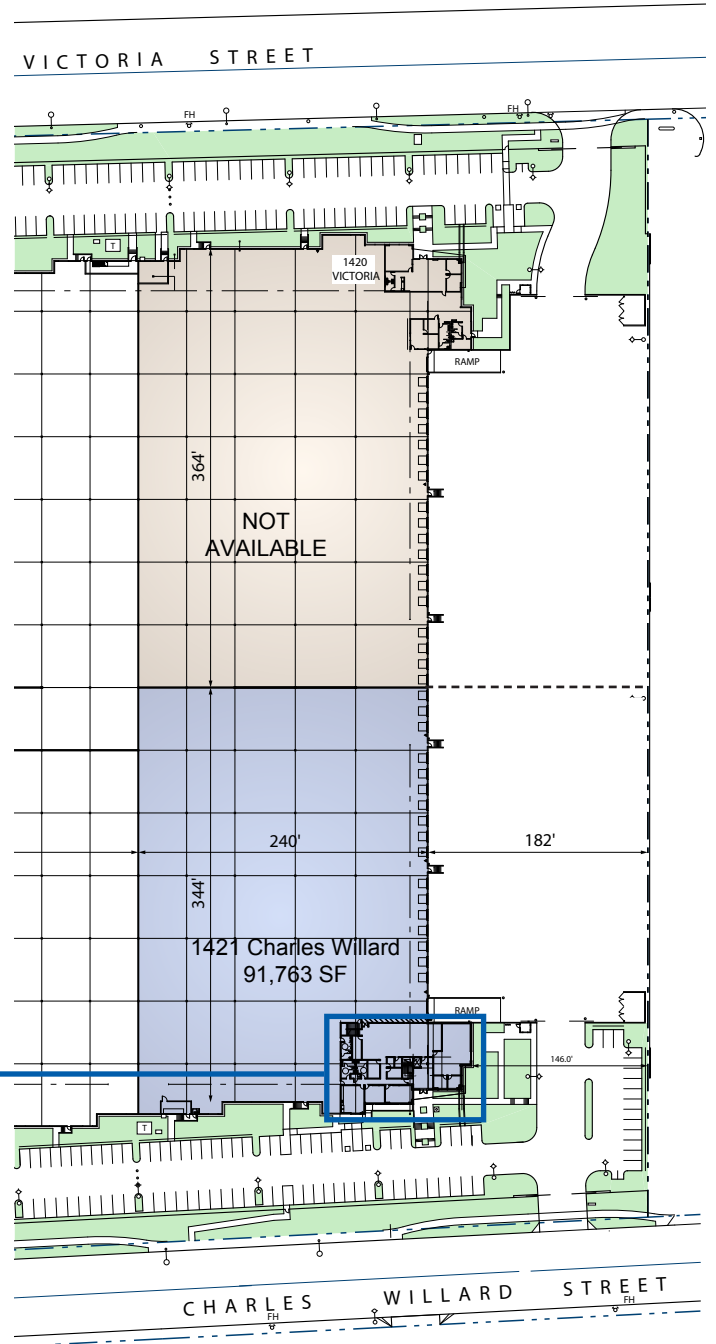
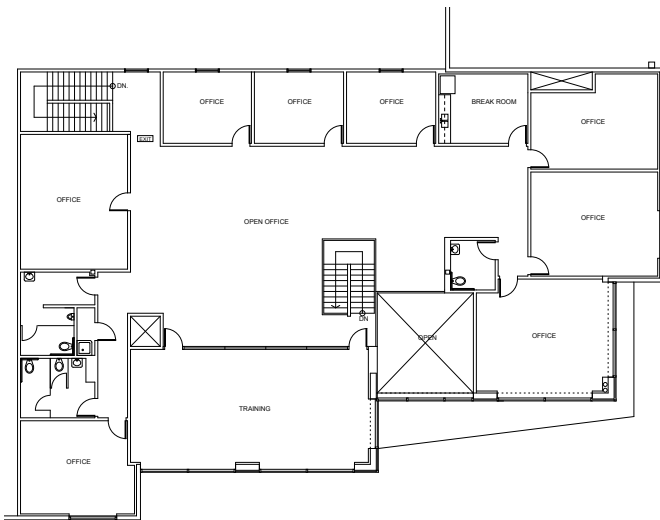
Owned & Managed By:



GROUND FLOOR OFFICE SPACE (6,800 SF)



SECOND FLOOR MEZZANINE OFFICE SPACE (6,207 SF)



For Further Information:

JOHN SCHUMACHER

Vice Chairman
+1 310 363 4960
john.schumacher@cbre.com
Lic. 00987225

CAROLINE REID

Senior Associate
+1 310 947 4219
caroline.reid@cbre.com
Lic. 02188038

NICKI PEETZ

Client Services Specialist
+1 310 363 4964
nicki.peetz@cbre.com
Lic. 01720809

CBRE

2221 Rosecrans Avenue
Suite 100
El Segundo, CA 90245